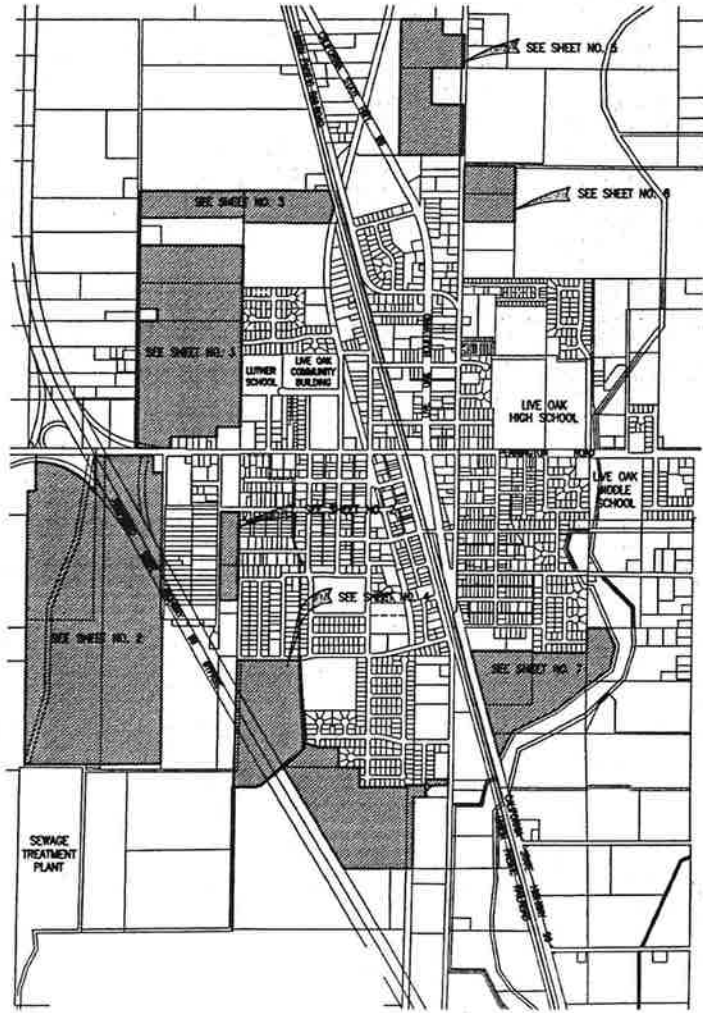


PROPOSED BOUNDARIES OF  
COMMUNITY FACILITIES DISTRICT NO. 2004-1  
OF THE CITY OF LIVE OAK, STATE OF CALIFORNIA



LOCATION MAP  
SCALE: 1" = 1000'

I HEREBY CERTIFY THAT THE WITHIN MAP SHOWING PROPOSED BOUNDARIES OF COMMUNITY FACILITIES DISTRICT NO. 2004-1 OF THE CITY OF LIVE OAK, STATE OF CALIFORNIA, WAS APPROVED BY THE CITY COUNCIL OF THE CITY OF LIVE OAK AT A REGULAR MEETING THEREOF, HELD ON THE 21<sup>ST</sup> DAY OF January, 2004, BY ITS RESOLUTION NO. 3-2004.

*M. Maria Dejean*  
CITY CLERK OF THE  
CITY OF LIVE OAK

FILED IN THE OFFICE OF THE CITY CLERK OF THE CITY OF LIVE OAK THIS 21<sup>ST</sup> DAY OF January, 2004.

*M. Maria Dejean*  
CITY CLERK OF THE  
CITY OF LIVE OAK

FILED THIS 27<sup>TH</sup> DAY OF January, 2004, AT THE HOUR OF 11:55 O'CLOCK A.M. IN BOOK 2 OF MAPS OF ASSESSMENT AND COMMUNITY FACILITIES DISTRICTS AT PAGE 72 IN THE OFFICE OF THE COUNTY RECORDER IN THE COUNTY OF SUTTER, STATE OF CALIFORNIA.

INSTRUMENT NO. 2004-000963  
Fee \$ 18.00

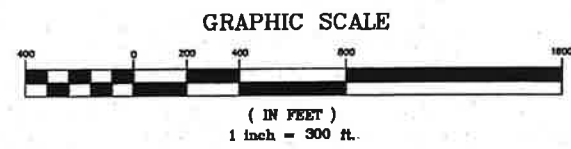
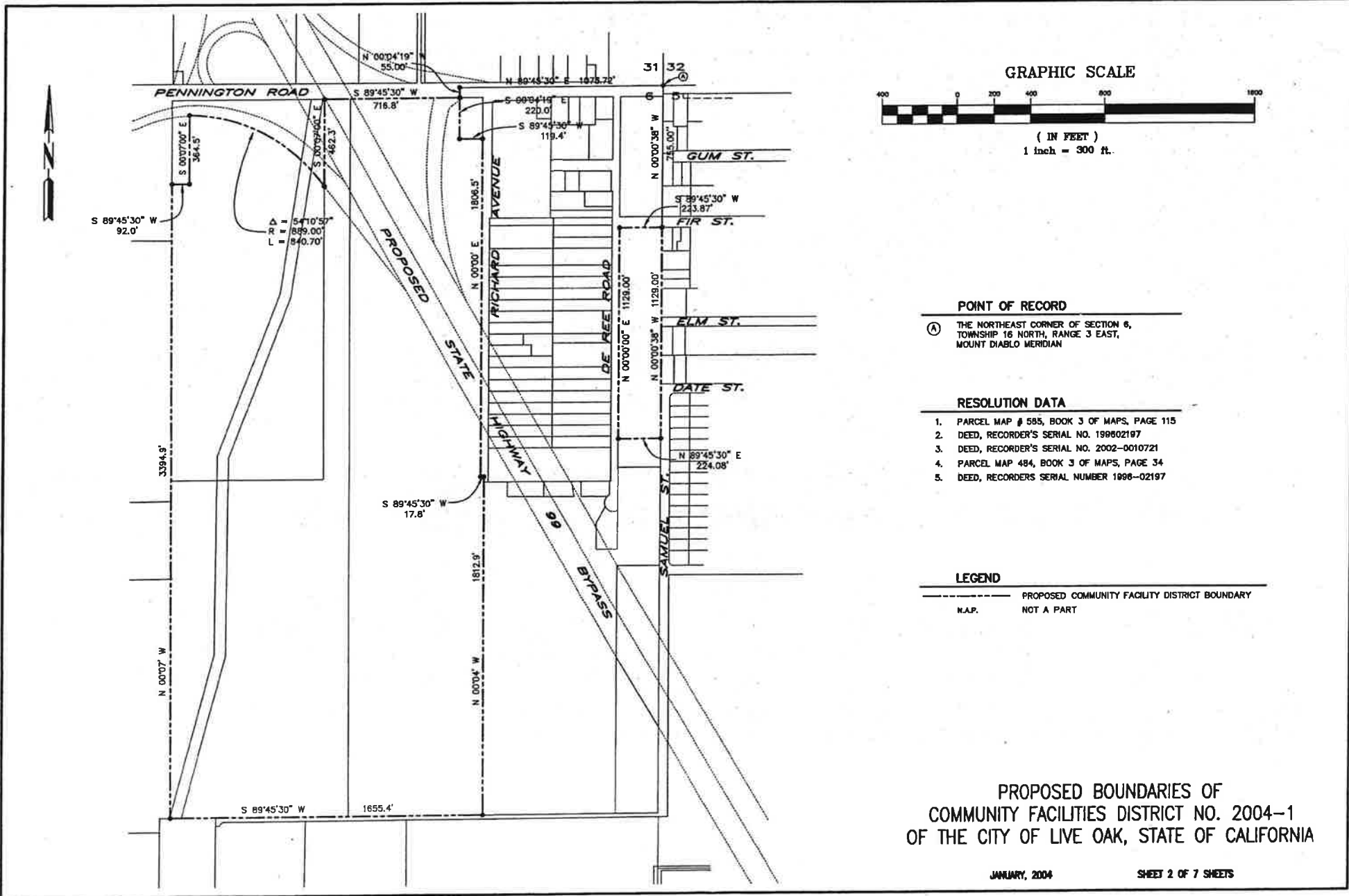
JOAN BECHTEL  
COUNTY RECORDER OF  
THE COUNTY OF SUTTER  
by *M. Smart*, Deputy

BOUNDARY MAP PREPARED BY:



*1/27/04*

Bruce A. Nash  
BRUCE A. NASH  
REGISTERED CIVIL ENGINEER 33381  
REGISTRATION EXPIRES: 06-30-06



**POINT OF RECORD**

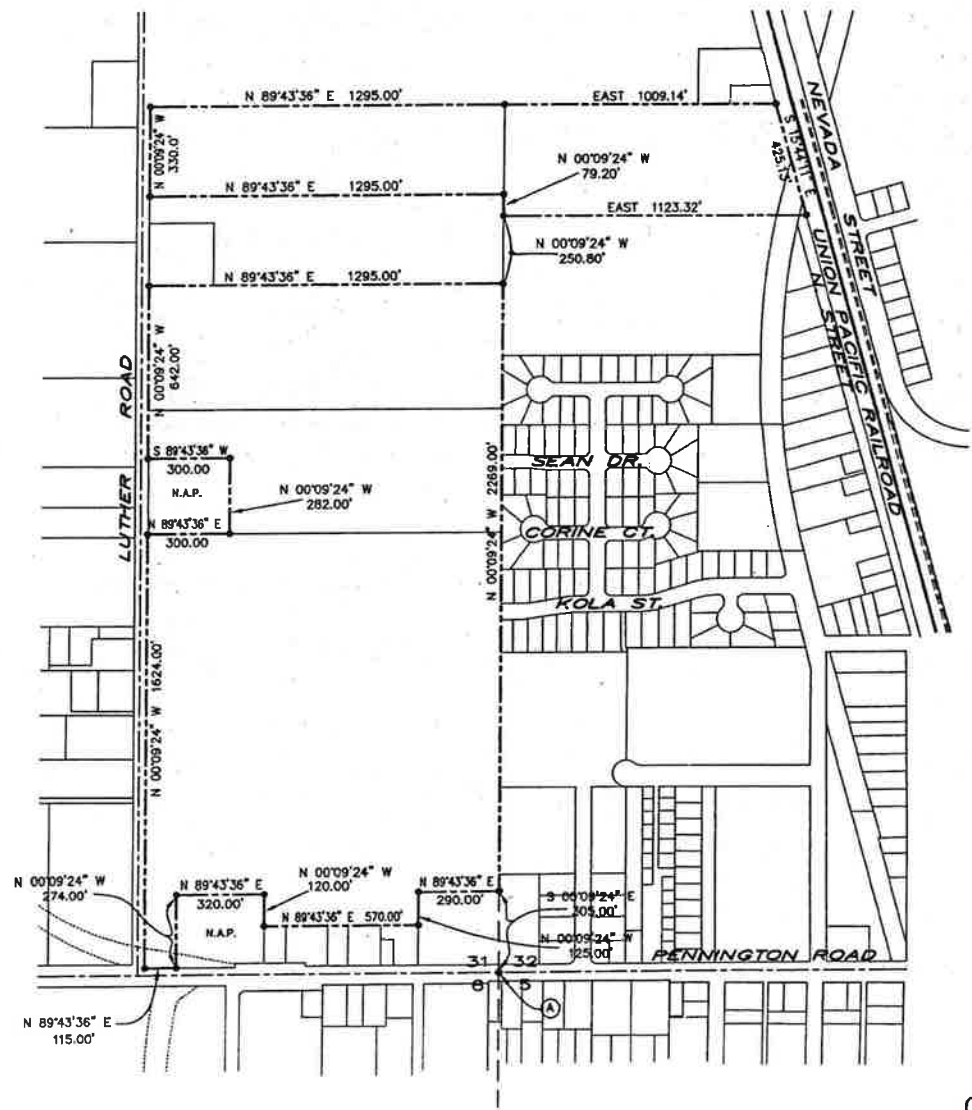
(A) THE NORTHEAST CORNER OF SECTION 6,  
TOWNSHIP 16 NORTH, RANGE 3 EAST,  
MOUNT DIABLO MERIDIAN

- RESOLUTION DATA**
1. PARCEL MAP # 585, BOOK 3 OF MAPS, PAGE 115
  2. DEED, RECORDER'S SERIAL NO. 199802197
  3. DEED, RECORDER'S SERIAL NO. 2002-0010721
  4. PARCEL MAP 484, BOOK 3 OF MAPS, PAGE 34
  5. DEED, RECORDERS SERIAL NUMBER 1998-02197

**LEGEND**

--- PROPOSED COMMUNITY FACILITY DISTRICT BOUNDARY  
 N.A.P. NOT A PART

PROPOSED BOUNDARIES OF  
 COMMUNITY FACILITIES DISTRICT NO. 2004-1  
 OF THE CITY OF LIVE OAK, STATE OF CALIFORNIA



GRAPHIC SCALE



( IN FEET )  
1 inch = 300 ft.

POINT OF RECORD

- (A) THE SOUTHEAST CORNER OF SECTION 31  
TOWNSHIP 17 NORTH, RANGE 3, EAST  
MOUNT Diablo MERIDIAN

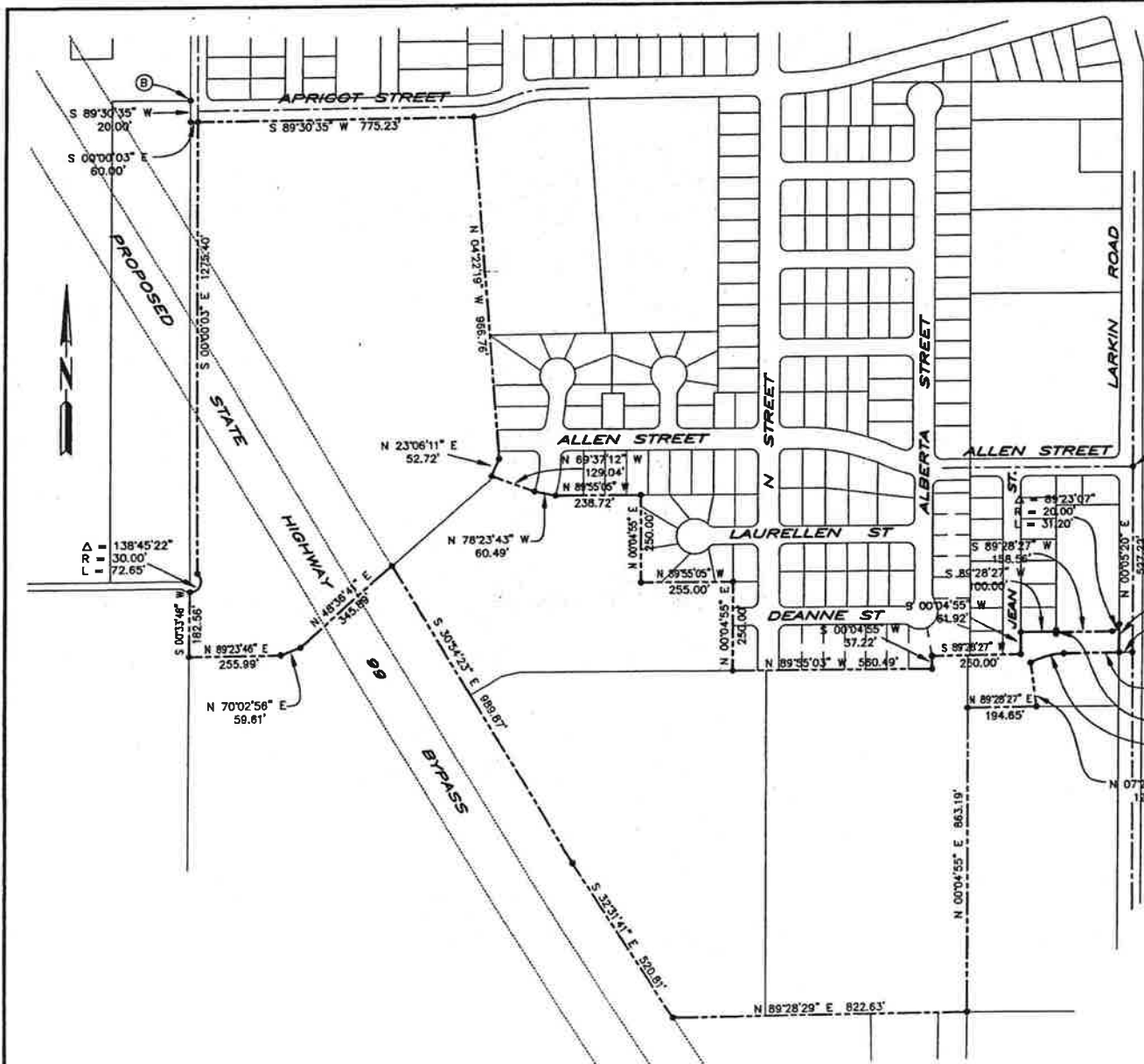
RESOLUTION DATA

1. PARCEL MAP NO. 804, BOOK 5 AT PAGES 14 & 14A
2. DEED, RECORDERS SERIAL NUMBER 1998-02994
3. DEED, BOOK 982 OF DEEDS, PAGE 820
4. DEED, BOOK 1646 OF DEEDS, PAGE 265
5. CERTIFICATE OF COMPLETION, BOOK 1448, PAGES 479 THRU 483
6. DEED, RECORDERS SERIAL NUMBER 2002-0019158

LEGEND

- PROPOSED COMMUNITY FACILITY DISTRICT BOUNDARY
- N.A.P. NOT A PART

PROPOSED BOUNDARIES OF  
COMMUNITY FACILITIES DISTRICT NO. 2004-1  
OF THE CITY OF LIVE OAK, STATE OF CALIFORNIA



**POINT OF RECORD**

- (A) THE INTERSECTION OF CENTERLINES, LARKIN ROAD AND ALLEN STREET
- (B) EAST 1/4 CORNER PROJECTED SECTION 6, TOWNSHIP 16 NORTH, RANGE 3 EAST, MOUNT DIABLO MERIDIAN

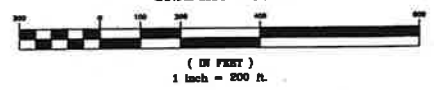
**RESOLUTION DATA**

1. RECORD OF SURVEY, BOOK 10 OF SURVEYS PAGE 242
2. MAP OF "EAGER ADDITION TO THE CITY OF LIVE OAK, UNIT II", BOOK 13 OF MAPS, PAGES 53 THRU 55
3. PARCEL MAP, BOOK 5 OF MAPS, PAGES 2, 2A & 2B
4. SUBDIVISION MAP OF "PEACHTREE, UNIT II - PHASE 1" BOOK 15 OF MAPS, PAGES 57 THRU 599
5. SUBDIVISION MAP OF "PEACHTREE, UNIT II - PHASE 2" BOOK 15 OF MAPS, PAGES 100 THRU 102
6. SUBDIVISION MAP OF "PEACHTREE, UNIT II - PHASE 3" BOOK 15 OF MAPS, PAGES 137 THRU 139
7. DEED, RECORDERS SERIAL NUMBER 199813010
8. DEED, BOOK 1359 OF DEEDS, PAGE 417

**LEGEND**

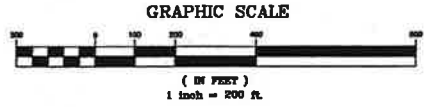
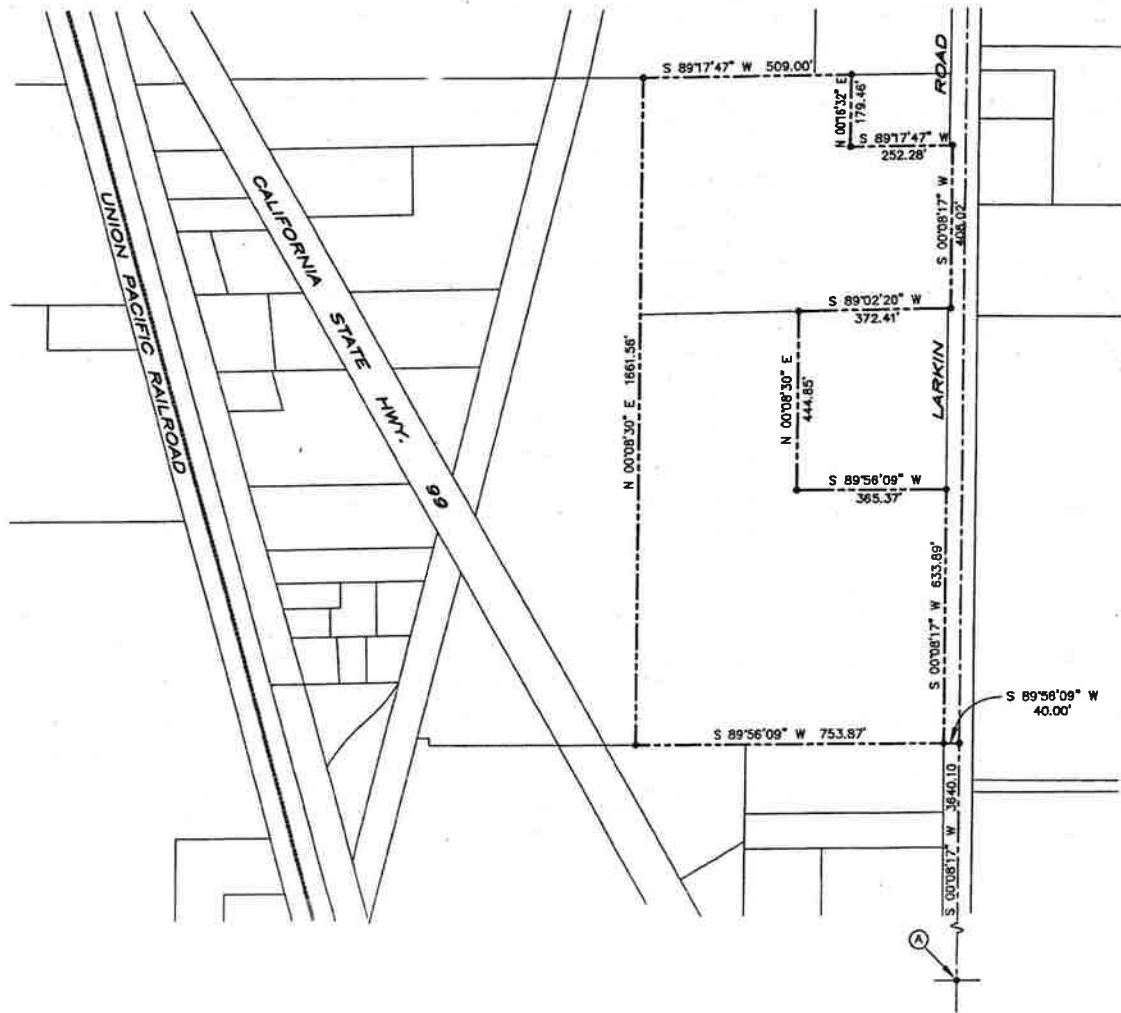
- PROPOSED COMMUNITY FACILITY DISTRICT BOUNDARY
- N.A.P. NOT A PART

**GRAPHIC SCALE**



PROPOSED BOUNDARIES OF  
COMMUNITY FACILITIES DISTRICT NO. 2004-1  
OF THE CITY OF LIVE OAK, STATE OF CALIFORNIA

02



**POINT OF RECORD**

- Ⓐ SOUTH 1/4 CORNER SECTION 32  
TOWNSHIP 17 NORTH, RANGE 3 EAST,  
MOUNT DIABLO MERIDIAN

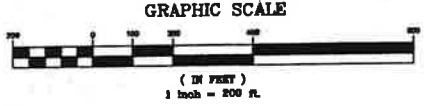
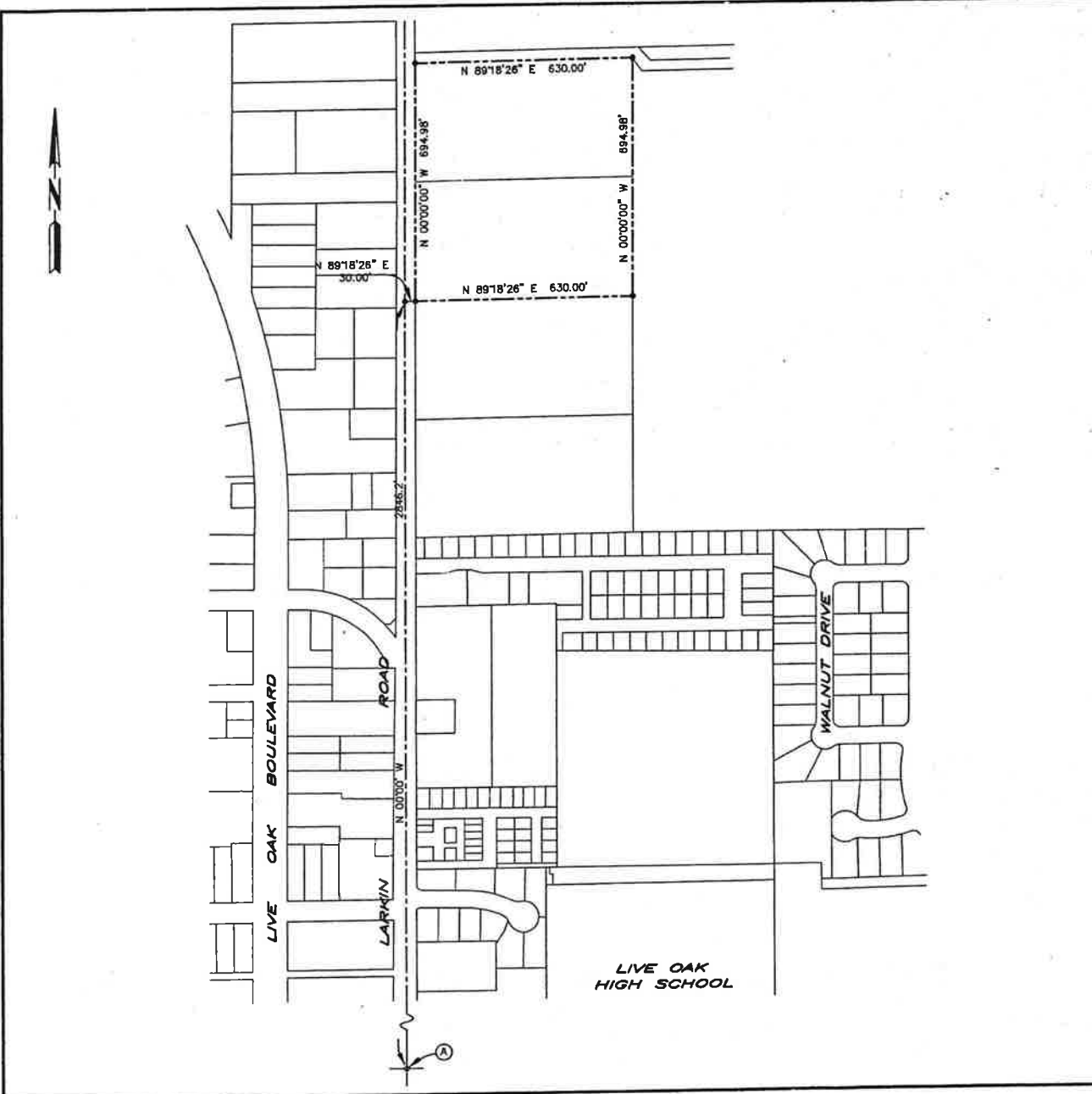
**RESOLUTION DATA**

1. PARCEL MAP NO. 855, BOOK 5 OF MAPS, PAGE 65
2. PARCEL MAP NO. 442, BOOK 2 AT PAGES 192 & 192A

**LEGEND**

- PROPOSED COMMUNITY FACILITY DISTRICT BOUNDARY
- M.A.P. NOT A PART

PROPOSED BOUNDARIES OF  
COMMUNITY FACILITIES DISTRICT NO. 2004-1  
OF THE CITY OF LIVE OAK, STATE OF CALIFORNIA



**POINT OF RECORD**

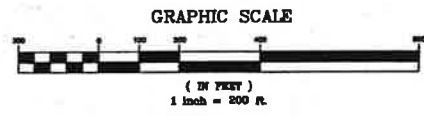
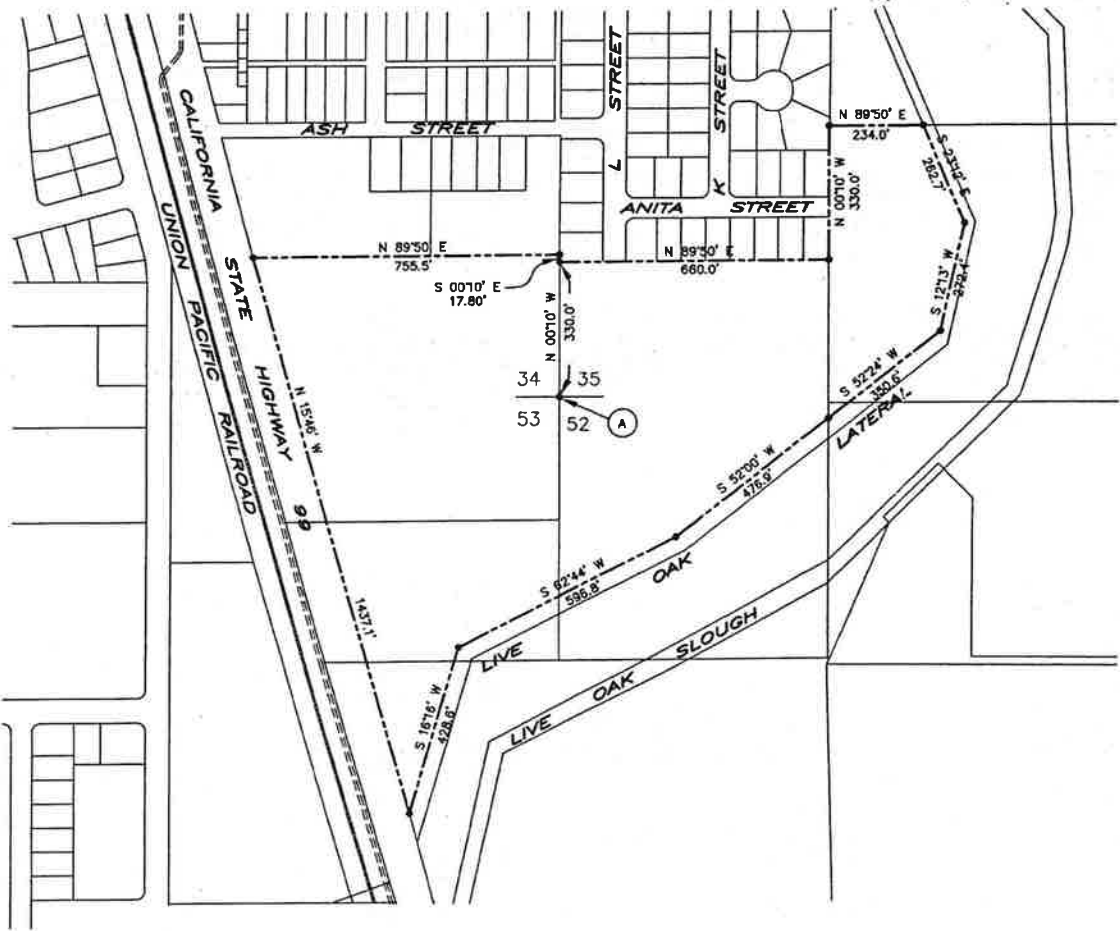
Ⓐ SOUTH QUARTER SECTION CORNER  
SECTION 32, TOWNSHIP 17 NORTH  
RANGE 3 EAST, MOUNT DIABLO MERIDIAN

- RESOLUTION DATA**
1. PARCEL MAP NO. 970, BOOK 6 OF MAPS, PAGES 50 & 50A
  2. PARCEL MAP NO. 928, BOOK 6 OF MAPS, PAGES 8, 8A & 8B

**LEGEND**

----- PROPOSED COMMUNITY FACILITY DISTRICT BOUNDARY  
N.A.P. NOT A PART

**PROPOSED BOUNDARIES OF  
COMMUNITY FACILITIES DISTRICT NO. 2004-1  
OF THE CITY OF LIVE OAK, STATE OF CALIFORNIA**



**POINT OF RECORD**

- Ⓐ SOUTHEAST CORNER OF LOT 34 OF SUNSET COLONY NO.1 RECORDED IN BOOK 1 OF SURVEYS, AT PAGE 51, SUTTER COUNTY RECORDS

**RESOLUTION DATA**

1. MAP OF "SUNSET COLONY NO.1", BOOK 1 OF SURVEYS, AT PAGE 51.
2. DEED, BOOK 816 OF DEEDS, PAGE 195
3. DEED, BOOK 1006 OF DEEDS, PAGE 381
4. DEED, BOOK 1470 OF DEEDS, PAGE 548

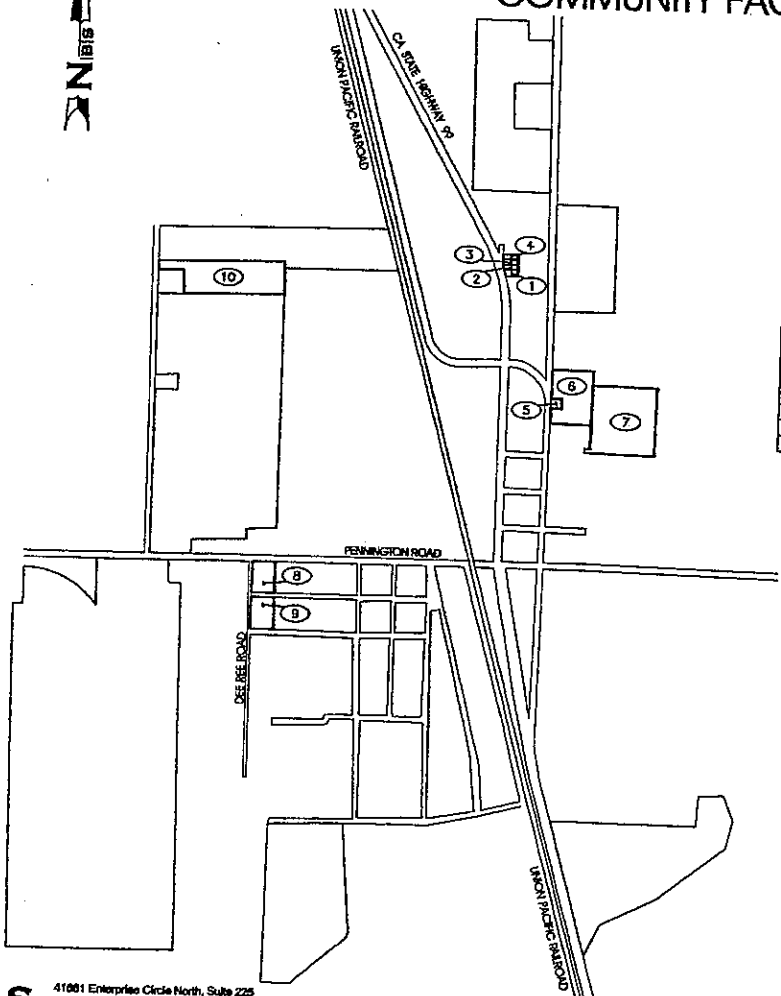
**LEGEND**

- PROPOSED COMMUNITY FACILITY DISTRICT BOUNDARY
- N.A.P. NOT A PART
- 35 LOT NUMBER PER SUNSET COLONY NO.1

PROPOSED BOUNDARIES OF  
COMMUNITY FACILITIES DISTRICT NO. 2004-1  
OF THE CITY OF LIVE OAK, STATE OF CALIFORNIA

# MAP OF PROPOSED BOUNDARIES OF CITY OF LIVE OAK ANNEXATION NO. 2005-1 COMMUNITY FACILITIES DISTRICT NO. 2004-1

CITY OF LIVE OAK  
COUNTY OF SUTTER  
STATE OF CALIFORNIA



PARCELS INCLUDED IN CFD	
APN	ID NUMBER
08-090-011	1
08-090-012	2
08-090-013	3
08-090-014	4
08-100-015	5
08-100-025	6
08-100-028	7
08-400-002	8
08-400-003	9
08-600-007	10

FILED IN THE OFFICE OF THE CITY CLERK OF THE CITY OF LIVE OAK, THIS 21<sup>st</sup> DAY OF September 2005.

*M. Marie Dwyer*  
CITY CLERK  
CITY OF LIVE OAK  
SUTTER COUNTY, CALIFORNIA

I HEREBY CERTIFY THAT THE WITHIN MAP SHOWING THE PROPOSED BOUNDARIES OF ANNEXATION NO. 2005-1 OF COMMUNITY FACILITIES DISTRICT NO. 2004-1, CITY OF LIVE OAK, COUNTY OF SUTTER, STATE OF CALIFORNIA, WAS APPROVED BY THE CITY COUNCIL OF THE CITY OF LIVE OAK, AT A MEETING THEREOF, HELD ON THE 21<sup>st</sup> DAY OF September, 2005, BY ITS RESOLUTION NO. 36-2005.

*M. Marie Dwyer*  
CITY CLERK  
CITY OF LIVE OAK  
SUTTER COUNTY, CALIFORNIA

FILED THIS 30<sup>th</sup> DAY OF September 2005, AT THE HOUR OF 3:56 O'CLOCK P.M., IN BOOK 2 OF MAPS OF ASSESSMENT AND COMMUNITY FACILITIES DISTRICTS AT PAGE 112 IN THE OFFICE OF THE COUNTY RECORDER OF THE COUNTY OF SUTTER, STATE OF CALIFORNIA.

*Joan Bechtel*  
COUNTY RECORDER  
COUNTY OF SUTTER, CALIFORNIA  
By: M. Smart, Deputy

Fee \$ 6.00  
INSTR. # 2005-0029725

**LEGEND**

- PROPOSED DISTRICT BOUNDARY
- PARCEL LINES
- RIGHT OF WAY
- PARCEL ID NUMBER